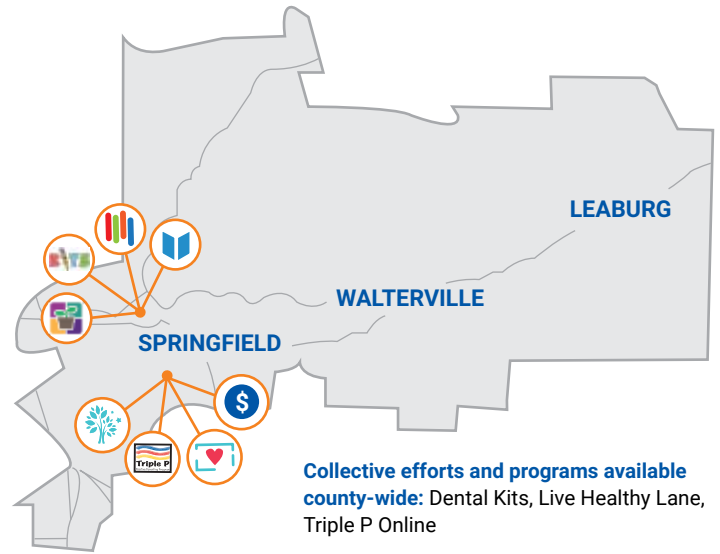



UNITED WAY'S IMPACT


SPRINGFIELD & SURROUNDING AREAS


COMMUNITY STATISTICS	
Childhood Poverty Rate:	19.9%
Average alphabet letter recognition by incoming kindergarteners:	13.3
Third Grade Reading Proficiency:	48%
High School Graduation Rate:	72.5%




Programs

 **BookFest** (2 locations): community book drive providing K-2 students at specific schools with age-appropriate books to encourage summer reading

 **Community Investment Grants:** 11 grants, programs and initiatives funded by United Way's LIVE UNITED Fund that support child and family success

 **Family Resource Center:** resource centers offering family support programs, basic needs assistance, and support with early academic success

 **Kids In Transition to School (KITS)** (4 locations): kindergarten readiness program for kids and families



LaneKids Parenting Education: funded partners providing evidence-based education programs



Preschool Promise (3 locations): high-quality preschool for families furthest from opportunity



SMART (RSVP) (6 locations): one-to-one reading program connecting volunteers with PreK-3 students



Triple P: Positive Parenting Program: individual and group setting parenting education using the Triple P curriculum

Investments

15th Night: builds a youth-informed community movement to end youth homelessness by identifying ways to support unaccompanied homeless youth to stay engaged in school, safely housed and off the street

Healthy Homes: brings together partners committed to building household stability and resiliency families, and establishes referral network for residents to access physical, behavioral and mental health supports

Latino & Immigrant Family Wellness Hub: consolidates three organizations to increase access to family health and wellness services to Latino and immigrant families

Food for Lane County: provides emergency food boxes to low-income families and individuals at 33 emergency food pantries throughout Lane County

CASA: supports the advocacy needs of children who experienced neglect and abuse and are in the foster care system

Relief Nursery: provides comprehensive family support and classroom experiences for children at extremely high risk for abuse or neglect

First Place Family Center: supports children living in poverty and homelessness by providing them with basic needs and preparing them to enter school ready to learn

Pearl Buck Center: offers specialized parenting education, therapeutic preschool, and in-home family supports to parents with cognitive limitations

Volunteers in Medicine: provides free primary and behavioral health care to low-income, uninsured or underinsured Lane County adults

Daisy CHAIN: provides families with free pre/post-natal support, resources, and education from the stage of expectant parents until 5 years of age

Direction Service: provides tailored case management and resources for youth with disabilities and their families

Learn more at unitedwaylane.org/county-impact



United Way of Lane County